

2021 FORD

SUPER DUTY[®]

F-250 | F-350 | F-450



OUR MOST CAPABLE HEAVY-DUTY PICKUP.

Its name – stamped front and center. A daily reminder of the inherent strength that defines Ford F-Series Super Duty® pickup. When productivity is your lifeblood, this is your tool. From F-250 to F-450, in work-ready XL to luxurious LIMITED, this truck's work ethic is legendary. The available TREMOR® Off-Road Package, which can be outfitted to include an available 12,000-lb. capacity Ford Performance Parts winch by WARN®, only adds to the storied heritage of Super Duty capability. Our dedication to Built Ford Tough® fundamentals has produced this: our most capable heavy-duty pickup. And this: F-Series. America's best-selling trucks!

BEST-IN-CLASS²
7,850 LBS.
 MAX. AVAILABLE PAYLOAD³

BEST-IN-CLASS
45,300 LBS.
 MAX. AVAILABLE GCWR⁴

BEST-IN-CLASS
475
 MAX. AVAILABLE HORSEPOWER⁵

37,000 LBS.
 MAX. AVAILABLE TOWING⁶

BEST MAX. AVAILABLE CONVENTIONAL TOWING⁷
24,200 LBS.
 IN THE CLASS

1,050 LB.-FT.
 MAX. AVAILABLE TORQUE⁵

BUILT *Ford* PROUD



F-450 LIMITED CREW CAB 4x4. Star White Metallic Tri-coat.⁸ Available 5th-Wheel/Gooseneck Trailer Tow Prep Package. Available equipment. (Max. Payload 4,840 lbs., Max. Gooseneck Towing 30,800 lbs., and Max. GCWR 43,500 lbs.)

1. Best-selling trucks for 44 years based on 1977-2020 CY total sales. **2.** Class is Full-Size Pickups over 8,500 lbs. GVWR.

3. Max. payload of 7,850 lbs. on F-350 DRW Regular Cab Long Box 4x2 with 6.2L engine and available F-350 Gas Heavy-Duty Payload Package (not shown). Max. payload varies and is based on accessories and vehicle configuration. See label on door jamb for carrying capacity of a specific vehicle. **4.** Max. GCWR of 45,300 lbs. on F-450 Regular Cab (not shown). **5.** Max. horsepower and torque based on 6.7L Power Stroke® V8 Turbo Diesel. **6.** Max. gooseneck tow rating of 37,000 lbs. available on F-450 Regular Cab 4x2 with diesel engine (not shown). Max. towing varies based on cargo, vehicle configuration, accessories and number of passengers. **7.** Max. conventional tow rating of 24,200 lbs. available on F-450 Crew Cab with diesel engine. Max. towing varies based on cargo, vehicle configuration, accessories and number of passengers. **8.** Additional charge.

Horsepower, torque, payload and towing are independent attributes and may not be achieved simultaneously. Vehicle imagery throughout this brochure may be computer-generated and may include available and aftermarket equipment.

IT'S NOT BRAGGING

WHEN YOU CAN BACK IT UP.



BEST-IN-CLASS

BEST DIESEL HP – 475

BEST GAS TORQUE¹ – 475 LB.-FT.

BEST GAS HP¹ – 430

BEST CONVENTIONAL TOWING CAPACITY² – 24,200 LBS.

BEST MAX. AVAILABLE PAYLOAD CAPACITY³ – 7,850 LBS.

BEST GROSS COMBINATION WEIGHT RATING (GCWR)⁴ – 45,300 LBS.

CLASS EXCLUSIVES

AVAILABLE PRO TRAILER BACKUP ASSIST™ WITH TRAILER REVERSE GUIDANCE

AVAILABLE BOXLINK™ WITH 4 PREMIUM LOCKING CLEATS

AVAILABLE STOWABLE LOADING RAMPS

AVAILABLE MULTICONTOUR FRONT SEATS WITH ACTIVE MOTION®

AVAILABLE REAR UNDER-SEAT STORAGE THAT FOLDS INTO THE FLAT LOAD FLOOR

AVAILABLE TWIN-PANEL MOONROOF

TREMOR® SUPERIORITY

BEST WATER-FORDING DEPTH IN THE CLASS – 33"

CLASS-EXCLUSIVE LIMITED-SLIP FRONT DIFFERENTIAL

CLASS-EXCLUSIVE TRAIL CONTROL™

CLASS-EXCLUSIVE ROCK CRAWL DRIVE MODE

CLASS-EXCLUSIVE EXTENDED AXLE VENT TUBES

LARGEST DIAMETER TIRES IN THE CLASS – 35"

F-250 LARIAT™ CREW CAB 4x4. Rapid Red Metallic Tinted Clearcoat.⁵ Available Chrome and FX4 Off-Road Packages. Available equipment. (Max. Payload 2,860 lbs., Max. Gooseneck Towing 14,200 lbs., Max. Conventional Towing 14,200 lbs., and Max. GCWR 21,800 lbs., when properly equipped with 6.75' box and 7.3L gas engine.)

1. Max. gas torque and horsepower with the available 7.3L gas engine. **2.** Max. conventional tow rating of 24,200 lbs. available on F-450 Crew Cab with diesel engine (not shown). Max. towing varies based on cargo, vehicle configuration, accessories and number of passengers. **3.** Max. payload of 7,850 lbs. on F-350 DRW Regular Cab Long Box 4x2 with 6.2L gas engine and available F-350 Gas Heavy-Duty Payload Package (not shown). Max. payload varies and is based on accessories and vehicle configuration. See label on door jamb for carrying capacity of a specific vehicle. **4.** Max. GCWR of 45,300 lbs. on F-450 Regular Cab (not shown). **5.** Additional charge.

Horsepower, torque, payload and towing are independent attributes and may not be achieved simultaneously.

TENACIOUS TORQUE.

In heavy-duty trucks, torque is the name of the game. And Super Duty® pickup has made a name for itself with stump-pulling torque and horsepower from our available 6.7L Power Stroke® V8 Turbo Diesel and available 7.3L V8 gas engines. They join the standard 6.2L V8 gas on F-250 and F-350 to form an incredibly robust engine lineup. All 3 powerplants, along with an available TorqShift® 10-speed automatic transmission and the TorqShift-G 6-speed automatic, are engineered and built by Ford. So whichever Built Ford Tough® powertrain you choose, it's designed to work seamlessly with Super Duty chassis components and vehicle calibrations. Letting you focus on building a better world, one project at a time.

6.7L V8 TURBO DIESEL

BEST-IN-CLASS
MAX. AVAILABLE HORSEPOWER

1,050 LB.-FT. TORQUE
475 HP

7.3L V8 GAS ENGINE


BEST GAS MAX. AVAILABLE TORQUE &
HORSEPOWER IN THE CLASS

475 LB.-FT. TORQUE
430 HP



6.7L POWER STROKE V8 TURBO DIESEL

1,050 LB.-FT. MAX. TORQUE | 475 MAX. HORSEPOWER

"You can't help but be awed by its 1,050 lb.-ft. of torque," **Autotrader**  says *Autotrader*.¹

A 36,000-psi fuel-injection system helps it optimize combustion and provide excellent throttle response. Forged-steel pistons provide high firing pressure capability and less friction for improved durability. A turbocharger with fully electronic vane actuator helps cold-weather performance, while the grille design ensures plenty of airflow to help keep things cool.

7.3L 2-VALVE V8 GAS

475 LB.-FT. MAX. TORQUE | 430 MAX. HORSEPOWER

Built from the ground up as a dedicated truck engine, this beast is the largest displacement V8 engine in the class. To help maintain optimum engine performance, its stout design features: cast-iron engine block construction; a forged-steel crankshaft; carbon-nitrided needle bearings in the valvetrain; robust pistons and ring packs with anti-wear coatings; piston cooling jets; and a variable-displacement oil pump located in the pan. Tough lives here.

6.2L 2-VALVE V8 GAS

430 LB.-FT. MAX. TORQUE | 385 MAX. HORSEPOWER

By supplying working power throughout the rpm range, the 6.2L V8 delivers an exceptional combination of driveability, hauling and towing performance. Dual-equal variable cam timing phases the intake- and exhaust-valve opening and closing events simultaneously to help optimize low-end torque and peak horsepower.

F-350 DRW LARIAT™ CREW CAB 4x4, Iconic Silver Metallic. Available Chrome Package. Available equipment. (Max. Conventional Towing of 21,200 lbs. when equipped with the available diesel engine.)

¹. From 2020 Ford F-Series Super Duty Review on Autotrader. Autotrader is a registered trademark and used with permission.

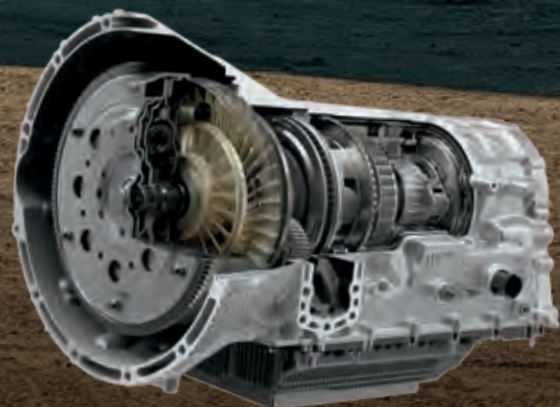
Horsepower and torque are independent attributes and may not be achieved simultaneously.

PURPOSEFUL POWER DELIVERY.



TORQSHIFT® 10-SPEED AUTOMATIC TRANSMISSION

In the unforgiving landscapes where Super Duty® pickup excels, smooth and efficient power delivery provides the strength and capability to get the job done. Our robust, available TorqShift 10-speed automatic, which can be paired with all 3 engines, is calibrated specifically for heavy-duty work. With a tall 4.615 1st-gear ratio producing outstanding starting torque, the 10-speed also offers a wide range of overdrive gears. A state-of-the-art hydraulic control system supplies smooth, fast shifts and exceptional gear selection.



SELECTABLE DRIVE MODES

Match your mode to the road with Tow/Haul, Deep Snow/Sand, Slippery, Normal and Eco. The available TREMOR® Off-Road Package adds a Rock Crawl drive mode.

LIVE-DRIVE PTO PROVISION

With stationary- and mobile-mode operations,¹ the available PTO provision can power snow plows, generators, sprayer pumps and more. Directly linked to the engine crankshaft, the PTO output gear delivers power anytime the engine is running – whether the truck is moving or not. The available diesel powertrain includes split-shaft capability, which allows for the operation of multiple accessories at the same time when the truck is stopped.

AVAILABLE POWER
TAKEOFF (PTO)
OUTPUT UP TO

**300 LB.-FT.
TORQUE**

F-250 KING RANCH® CREW CAB 4x4. Antimatter™ Blue/Stone Gray Metallic two-tone. Available 5th-Wheel/Gooseneck Trailer Tow Prep Package. Available equipment.

1. Stationary-mode PTO max. torque ratings: 300 lb.-ft. on diesel, 250 lb.-ft. on gas. Mobile-mode PTO max. torque ratings: 200 lb.-ft. on diesel, 125 lb.-ft. on 7.3L gas, 115 lb.-ft. on 6.2L gas.

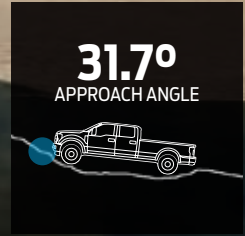
RISE ABOVE.

TACKLE TOUGH TERRAIN IN TREMOR.®

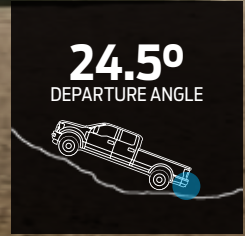


With an impressive 10.8" of ground clearance, the available TREMOR Off-Road Package can turn your Super Duty® pickup into an incredibly capable off-road machine. Without compromising any of its heavy-duty capability (max. available towing of 21,900 lbs.¹ and max. available payload of 4,210 lbs.²), a TREMOR equipped Super Duty adds rock crawling, steep hill climbs, and mud bogging to its already formidable list of skills. Raise your XLT through PLATINUM® model to the next level with the available TREMOR Off-Road Package.

- GNARLY 35" DIAMETER OFF-ROAD TIRES
- AVAILABLE FORD PERFORMANCE PARTS WINCH BY WARN®
- TRAIL CONTROL™
- LIMITED-SLIP FRONT DIFFERENTIAL
- ELECTRONIC-LOCKING REAR DIFFERENTIAL
- EXCLUSIVE ROCK CRAWL DRIVE MODE



31.7°
APPROACH ANGLE



24.5°
DEPARTURE ANGLE



12,000 LBS. OF WINCHING POWER

This available Ford Performance Parts winch by WARN extends TREMOR capability even further. Includes high-tensile-strength cable. The only wireless remote in its class. Available on both diesel and gas models.



BEST WATER FORDING DEPTH IN THE CLASS

TREMOR has 33" of water-fording capability,³ aided by unique front springs that increase ride height, and extended axle vent tubes.

F-250 LARIAT™ CREW CAB 4x4. Antimatter™ Blue Metallic. Available LARIAT Black and TREMOR Off-Road Packages. Available equipment. (Max. Gooseneck Towing 16,200 lbs. and Max. Payload 2,780 lbs. when equipped with the 6.75' box, the available 7.3L gas engine, and the available TREMOR Off-Road Package.)

1. Max. gooseneck tow rating of 21,900 lbs. available on F-350 SRW Crew Cab 4x4 with 6.75' box, 6.7L diesel engine and available TREMOR Off-Road Package (not shown). Max. towing varies based on cargo, vehicle configuration, accessories and number of passengers.

2. Max. payload rating of 4,210 lbs. available on F-350 SRW Crew Cab 4x4 with 6.75' box, 7.3L gas engine and available TREMOR Off-Road Package (not shown). Max. payload varies and is based on accessories and vehicle configuration. See label on door jamb for carrying capacity of a specific vehicle. **3.** Always determine the water depth before attempting a crossing and proceed slowly. Refer to your owner's manual for detailed information regarding driving through water.

Always consult the owner's manual before off-road driving, know your terrain and trail difficulty, and use appropriate safety gear.

Payload and towing are independent attributes and may not be achieved simultaneously.



BRING IT.
HAUL MORE THAN ANYONE ELSE.

Having the right tools improves on-the-job productivity. Starting with F-Series Super Duty® pickup. Its heavily fortified cargo box – made from high-strength, military-grade, aluminum alloy¹ – doesn't rust, resists corrosion, and comes in 6.75' and 8' lengths. Around this easy-to-access box is an amazing array of available features that allow you to utilize its space to the fullest: extended-length step bars, integrated tailgate step, LED box lighting, remote tailgate release, BoxLink™ with locking cleats, and stowable loading ramps. Helping you become as proficient and productive as possible. 24/7.

BEST-IN-CLASS
7,850 LBS.
MAX. AVAILABLE PAYLOAD²

F-350 DRW XL REGULAR CAB 4x2, Oxford White. Available STX® and F-350 Gas Heavy-Duty Payload Packages. Available equipment. (Max. payload of 7,850 lbs. as shown.)
1. 6000-series aluminum alloy. **2.** Max. payload of 7,850 lbs. on F-350 DRW Regular Cab Long Box 4x2 with 6.2L engine and available F-350 Gas Heavy-Duty Payload Package. Max. payload varies and is based on accessories and vehicle configuration. See label on door jamb for carrying capacity of a specific vehicle.

TOW IT. TONS OF IT.

A Super Duty® pickup isn't just built to a number. It's designed, engineered and tested so you can tow up to 37,000 lbs¹ with confidence. Available electronically controlled hydraulic steering and available adaptive steering help make it easier to control and drive, especially when towing heavy loads. Standard Trailer Sway Control helps keep truck and trailer in line. The available Ultimate Trailer Tow Camera System includes 5 cameras (views shown at right) to monitor all the action, plus class-exclusive Pro Trailer Backup Assist™² with Trailer Reverse Guidance² makes parking your trailer as simple as turning a knob, once programmed.³



REAR CHMSL CAMERA VIEW
The zoom feature of this view is particularly helpful when connecting a 5th-wheel or gooseneck trailer.



TRAILER REVERSE GUIDANCE VIEW
Automatically switches between side and rear camera views to show you what's most relevant while backing up any trailer – including 5th-wheel and gooseneck – and provides screen graphics to help guide you.

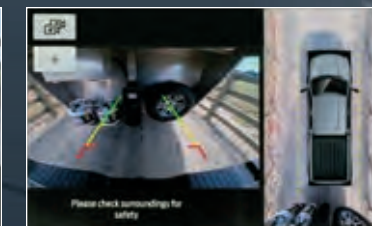
Front split-view



360-DEGREE CAMERA VIEWS

The front, rear and sideview mirror cameras of this system allow you to toggle through the following views: front and rear normal, front and rear split-view, and front and rear normal + 360.

Rear normal + 360



F-350 PLATINUM® CREW CAB 4x4. Antimatter™ Blue Metallic. Available FX4 Off-Road Package. Available equipment and aftermarket accessories. (Max. Conventional Towing of 20,000 lbs. when equipped with the 8' box and available diesel engine.)

1. Max. gooseneck tow rating of 37,000 lbs. available on F-450 Regular Cab 4x2 with diesel engine (not shown). Max. towing varies based on cargo, vehicle configuration,

accessories and number of passengers. 2. Driver-assist features are supplemental and do not replace the driver's attention, judgment and need to control the vehicle. It does not replace safe driving. See owner's manual for details and limitations. 3. Please consult your owner's manual or Pro Trailer Backup Assist Quick Start Guide for information on setting up your trailer.

CONFIDENCE. MILE AFTER MILE.

From the work site to the highway, we can all use more confidence at the wheel. That's why the F-Series Super Duty® pickup offers an extensive, well-rounded collection of standard and available driver-assist technologies. These advanced features are about supplementing your driving skills! Helping you feel confidently in command at the wheel.



FORD CO-PILOT360™ TECHNOLOGY

- STANDARD AUTOLAMP (AUTOMATIC ON/OFF HEADLAMPS)
- STANDARD HILL START ASSIST
- STANDARD REAR VIEW CAMERA WITH DYNAMIC HITCH ASSIST
- STANDARD TRAILER SWAY CONTROL
- AVAILABLE ADAPTIVE CRUISE CONTROL
- AVAILABLE ADAPTIVE STEERING
- AVAILABLE AUDIBLE LANE DEPARTURE WARNING
- AVAILABLE AUTO HIGH-BEAM HEADLAMPS
- AVAILABLE BLIS® (BLIND SPOT INFORMATION SYSTEM) WITH TRAILER COVERAGE AND CROSS-TRAFFIC ALERT
- AVAILABLE LANE-KEEPING ALERT WITH DRIVER ALERT SYSTEM
- AVAILABLE PRE-COLLISION ASSIST WITH AUTOMATIC EMERGENCY BRAKING
- AVAILABLE RAIN-SENSING WINDSHIELD WIPERS
- AVAILABLE REVERSE SENSING SYSTEM
- AVAILABLE ULTIMATE TRAILER TOW CAMERA SYSTEM
- AVAILABLE VOICE-ACTIVATED TOUCHSCREEN NAVIGATION SYSTEM

F-350 PLATINUM® CREW CAB 4x4. Star White Metallic Tri-coat.² Available TREMOR® Off-Road Package. Available and aftermarket equipment.

1. Driver-assist features are supplemental and do not replace the driver's attention, judgment and need to control the vehicle. It does not replace safe driving. See owner's manual for details and limitations. 2. Additional charge.

MAXIMIZE PRODUCTIVITY.

Before you even head to the work site, you can order supplies from the cabin of your Super Duty® pickup using the 4G LTE Wi-Fi hotspot capability¹ and your laptop or smartphone. As you drive, keep your eyes on the road – and your hands firmly on the wheel – with available SYNC® 3. Our easy-to-use, voice-activated technology also has an 8" LCD capacitive touchscreen. With its sleek, user-friendly interface, SYNC 3 is much more than the ability to make calls and play your favorite music – it's about making connectivity fast, smart and simple.²

XLT CREW CAB 4x4. Medium Light Camel. Available equipment.

Don't drive while distracted. Use voice-operated systems when possible; don't use handheld devices while driving.

1. Wi-Fi hotspot includes complimentary wireless data trial that begins upon AT&T activation and expires at the end of 3 months or when 3GB of data is used, whichever comes first, but cannot extend beyond the complimentary subscription period for remote features. To activate, go to www.att.com/ford. **2.** Some features may be locked out while the vehicle is in gear. Not all features are compatible with all phones. **3.** Remote start and remote lock/unlock require power door locks. **4.** FordPass Connect,

the FordPass App, and complimentary Connected Service are required for remote features (see FordPass Terms for details). Connected service and features depend on compatible AT&T network availability. Evolving technology/cellular networks/vehicle capability may limit functionality and prevent operation of connected features. Connected service excludes Wi-Fi hotspot. FordPass App, compatible with select smartphone platforms, is available via download. Message and data rates may apply. **5.** Commands may vary by phone and AppLink software. **6.** Requires active SiriusXM® services subscription. **7.** Requires phone with active data service and compatible software. SYNC 3 does not control 3rd-party products while in use. 3rd parties are solely responsible for their respective functionality.

PUT CONTROL IN THE PALM OF YOUR HAND

Start, stop, lock and unlock your Super Duty³ from your smartphone with FordPass™ Connect and the FordPass App.⁴

STREAM YOUR CONTENT

You – and the crew – can connect up to 10 devices at once, inside Super Duty or up to 50' away – with 4G LTE Wi-Fi hotspot capability¹ and FordPass Connect.

COMMAND YOUR APPS

Use voice commands to control favorite apps on your paired smartphone or other mobile devices with available SYNC AppLink.⁵

FOLLOW ITS LEAD

Get information on traffic delays, alternate route suggestions, weather conditions, gas stations and more⁶ with the available Navigation System.

PLAY YOUR FAVORITES

Enjoy available compatibility with Apple CarPlay^{®7} for your iPhone[®] or Android Auto^{™7} for your Android[™] smartphone.

TRACK IT

From each journey, fleet vehicles produce informative data. Driven through available Ford Telematics[™], this data helps you optimize your fleet by understanding where your vehicles go, how they're used and how they're running – giving you time to focus on the rest of your business. You can also use available Ford Data Services[™] to access vehicle data with other fleet systems or telematics service providers. We'll get you the data you need. Learn more at commercialsolutions.ford.com.

8" COLOR LCD PRODUCTIVITY SCREEN
Choose this available option to configure the instrument cluster and even customize your own home screen.

8" LCD TOUCHSCREEN
Apple CarPlay® and Android Auto™ compatibility,¹ plus powerful apps and SYNC® 3² are yours with this available touchscreen.

110V/400W AC POWER OUTLETS
Power small tools, battery chargers or laptops with these available covered outlets.

WIRELESS CHARGING³
To keep your phone battery topped off, open the media bin door and set it on the available induction pad. No cord. No hassle.

B&O SOUND SYSTEM
With 10 high-performance speakers and 1,000 watts of precision digital audio, this available feature can help you unwind.


4WD SIMPLIFIED
Engaging available 4WD is as simple as setting the manual-locking front hubs to AUTO and turning this dial.

POWER-ADJUSTABLE PEDALS
This available feature helps make the drive as comfortable as possible. Available with or without memory.

POSITIONED FOR SUCCESS.

MIX BUSINESS AND PLEASURE.

Inside the hardworking 2021 Super Duty® pickup, loads of storage areas swallow tools and supplies, while easy-to-navigate controls, plenty of cupholders, and large dials and switches help you stay highly productive – even with work gloves on. A sliding center console panel even lets you adjust how that space is split between cupholders and storage. These productivity enhancers join a long list of amenities that help make any haul in Super Duty more comfortable than you can imagine.

“Inside, the well-appointed cabin is remarkably quiet,” says *Autotrader*.⁴ **Autotrader** 

F-350 DRW KING RANCH® CREW CAB 4x4. Kingsville King Ranch leather front and rear seats with vinyl piping. Available equipment.

¹ Requires phone with active data service and compatible software. SYNC 3 does not control 3rd-party products while in use. 3rd parties are solely responsible for their respective functionality. ² Don't drive while distracted. Use voice-operated systems when possible; don't use handheld devices while driving. Some features may be locked out while the vehicle is in gear. Not all features are compatible with all phones. ³ Qi wireless charging may not be compatible with all mobile phones. ⁴ From *2020 Ford F-Series Super Duty Review* on Autotrader. Autotrader is a registered trademark and used with permission.



6 UPFITTER SWITCHES

Available 40- and 25-amp switches let you easily power aftermarket accessories.

TWIN-PANEL MOONROOF

This available feature offers expansive coverage, bathing the cabin in natural light.

HEATED 10-WAY POWER DRIVER'S SEAT

Includes ventilation, power recline, power lumbar and memory. An available option with real perks.

UP TO 43.6" REAR SEAT LEG ROOM

Stretch out your legs and enjoy the ride in Crew Cab models.



REAR UNDER-SEAT STORAGE

Hold items in place with this available feature. To hide what you've stored, fold the seat down and lock it for security.

EQUIPPED TO EMPOWER.

The functional and roomy cabin of Super Duty® pickup helps you get your jobs done, whether you're transporting a crew of workers or loading it up with cargo. SuperCab™ models feature rear-hinged rear doors that open wide, making loading and unloading a snap. SuperCab and Crew Cab models feature a flat rear load floor that makes it easy to load large items. And Crew Cab models offer convenient, available under-seat storage (shown at right) that can be raised, divided and locked when the rear seat is folded down. When not needed, it folds into the floor to maintain a flat load floor.

LIMITED CREW CAB 4x4. Highland Tan Two-Tone Regency leather front and rear seats. Available equipment.

ROCK SOLID. REPORTING FOR DUTY.

Super Duty® pickups are built to handle your toughest jobs. Our confidence comes from the millions of miles of testing they've already endured. Before punishing vehicles at our proving grounds, we conduct virtual testing of components in the lab. We drive prototype vehicles at temperatures from -20°F to 120°F. We also put models in the hands of people like you, working in some of the harshest environments. Engine thermal shock tests swing ambient temperature 250°F in under 2 minutes, while powertrain tests replicate going up a 6% grade for over 500 miles without stopping. The Super Duty lineup also endures 4-post frame-twists, gravel, water, and salt brine and mud baths. We do it all so you can drive a Ford F-Series – the toughest trucks we know how to build.

HIGH STRENGTH – DOESN'T RUST

The Super Duty body and cargo box are made from high-strength, military-grade, aluminum alloy¹ that's hardened through heat treating for even greater strength. Plus, the body and cargo box don't rust and resist corrosion. That's leadership that counts. For years down the road.

ENGINEERED FOR EXTREMES

Driveshafts, transfer cases and U-joints are engineered to handle the monstrous torque output of Super Duty pickup. In the 4WD transfer case, an electromagnetic clutch provides smooth and immediate shift-on-the-fly capability in conditions where additional traction is needed.

F-450 XL REGULAR CAB 4x2. Oxford White. Available STX® and 5th-Wheel/Gooseneck Trailer Tow Prep Packages. Available equipment. (Max. Payload 6,180 lbs., Max. Gooseneck Towing 37,000 lbs., and Max. Conventional Towing 21,200 lbs.)

¹ 6000-series aluminum alloy.

2.5" AND 3" TRAILER HITCH RECEIVERS

Integrated into the frame – and using so much high-strength steel that weight-equalizing bars aren't needed – saving time and effort when hooking up a trailer. On many configurations, hitches are weight-carrying up to the max. tow ratings.

STRONG AND CAPABLE REAR AXLES

Ratios range from 3.31 to 4.30. Available choices include non-limited-slip, limited-slip and electronic-locking. Gear and bearing designs are engineered and optimized by weight for the extreme capability of Super Duty.



3 LEVELS OF SUPER DUTY CAPABILITY.

There's capability. And then there's Super Duty® pickup capability. Within each heavy-duty truck subsegment – 250/2500 Pickups, 350/3500 Pickups, 450 Pickups – an F-Series Super Duty puts up impressive numbers in these critical measures of all-around capability: max. conventional towing, max. gooseneck towing and max. payload. Our owners expect it. The 2021 Super Duty delivers.

	F-250	F-350	F-450
SUBSEGMENT	250/2500 Pickups ²	350/3500 Pickups ³	450 Pickups ⁴
Max. Towing ¹	22,800 lbs. – Leader	37,750 lbs.	37,000 lbs.
Max. Conventional Towing ¹	20,000 lbs. – Leader	21,200 lbs.	24,200 lbs. – Best-in-Class
Max. Payload ¹	4,260 lbs.	7,850 lbs. – Best-in-Class ⁵	6,210 lbs. – Leader
Engines	6.2L Gas V8, 7.3L Gas V8, 6.7L Power Stroke® V8 Turbo Diesel	6.2L Gas V8, 7.3L Gas V8, 6.7L Power Stroke V8 Turbo Diesel	6.7L Power Stroke V8 Turbo Diesel
Drivetrains	Single Rear Wheel (SRW) 4x2 or 4x4	SRW or Dual Rear Wheel (DRW) 4x2 or 4x4	DRW 4x2 or 4x4
Cab Types	Regular Cab, SuperCab, [™] Crew Cab	Regular Cab, SuperCab, Crew Cab	Regular Cab Crew Cab
Box Lengths	6.75' or 8'	6.75' or 8'	8'
Trim Levels	All	All	All



F-250 XL CREW CAB 4x4. Agate Black Metallic. (Max. Payload of 3,320 lbs., Max. Conventional Towing of 20,000 lbs., Max. Gooseneck Towing of 19,100 lbs., with available 6.7L diesel engine and available F-250 High-Capacity Trailer Tow Package); **F-350 LARIAT™ CREW CAB 4x4.** Carbonized Gray Metallic. (Max. Payload of 3,440 lbs., Max. Conventional Towing of 20,000 lbs., Max. Gooseneck Towing of 20,600 lbs., with available 6.7L diesel engine); **F-450 XLT CREW CAB 4x4.** Oxford White. (Max. Payload of 5,120 lbs., Max. Conventional Towing of 24,200 lbs., Max. Gooseneck Towing of 31,900 lbs.). All shown with available equipment.

1. Available rating. When properly configured with available equipment. See Payload and Towing charts in the Specifications section for maximum ratings by

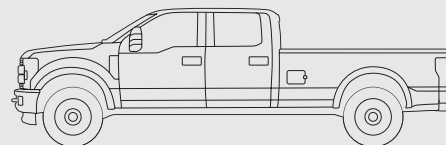
configuration. 2. 250/2500 pickup subsegment includes Ford F-250 Super Duty, GMC Sierra 2500, Chevrolet Silverado 2500, Ram 2500 and Nissan Titan XD. 3. 350/3500 pickup subsegment includes Ford F-350 Super Duty, GMC Sierra 3500, Chevrolet Silverado 3500, and Ram 3500. 4. 450 pickup subsegment includes Ford F-450 Super Duty. 5. Class is Full-Size Pickups over 8,500 lbs. GVWR.

NOTE: Maximum payload and towing capabilities are for properly equipped base vehicles with required equipment and a 150-lb. driver and vary based on cargo, vehicle configuration, accessories and number of passengers. See label on door jamb for carrying capacity of a specific vehicle. Payload and towing are independent attributes and may not be achieved simultaneously.

XL/STX[®]

HIGHLIGHTS

- BLACK VINYL FLOORING
- SYNC[®] WITH 4.2" LCD SCREEN AND 1 SMART-CHARGING USB PORT
- FORDPASS™ CONNECT¹ WITH 4G LTE WI-FI HOTSPOT CAPABILITY²
- AUTOLAMP (AUTOMATIC ON/OFF HEADLAMPS)
- REAR VIEW CAMERA WITH DYNAMIC HITCH ASSIST



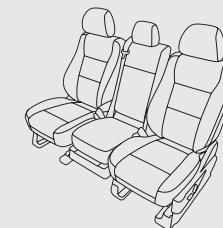
REGULAR CAB | 8' BOX
F-250 SRW, F-350 SRW,
F-350 DRW, F-450 DRW

SUPERCAB™ | 6.75' BOX
F-250 SRW, F-350 SRW

SUPERCAB | 8' BOX
F-250 SRW, F-350 SRW,
F-350 DRW

CREW CAB | 6.75' BOX
F-250 SRW, F-350 SRW

CREW CAB | 8' BOX
F-250 SRW, F-350 SRW,
F-350 DRW, F-450 DRW



FRONT 40/20/40 SPLIT BENCH SEAT
Standard

**FRONT BUCKET SEATS
WITH MINI CONSOLE**
Available



F-250 REGULAR CAB 4x4. Oxford White. Available equipment.

1. FordPass Connect, the FordPass App, and complimentary Connected Service are required for remote features (see FordPass Terms for details). Connected service and features depend on compatible AT&T network availability. Evolving technology/cellular networks/vehicle capability may limit functionality and prevent operation of connected features. Connected service excludes Wi-Fi hotspot. At purchase, the FordPass Connect modem is connected and sending vehicle data (e.g., diagnostics) to Ford. To disable, or for more information, see in-vehicle connectivity settings. Learn more at FordConnected.com. 2. Wi-Fi hotspot includes complimentary wireless data trial that begins upon AT&T activation and expires at the end of 3 months or when 3GB of data is used, whichever comes first, but cannot extend beyond the complimentary subscription period for remote features. To activate, go to www.att.com/ford.



REGULAR CAB 4x4. Medium Earth Gray interior. Available equipment.



REGULAR CAB 4x4. Dark Earth Gray cloth seats. Available equipment. See charts in the back of the brochure for full trim specifications.



STANDARD



AVAILABLE XL VALUE PACKAGE

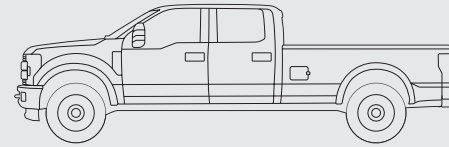


AVAILABLE STX PACKAGE

XLT

HIGHLIGHTS

- PRE-COLLISION ASSIST WITH AUTOMATIC EMERGENCY BRAKING
- BLIS® (BLIND SPOT INFORMATION SYSTEM) WITH TRAILER COVERAGE
- TRAILER BRAKE CONTROLLER
- REMOTE KEYLESS ENTRY SYSTEM
- SYNC® 3 WITH 8" TOUCHSCREEN AND 2 SMART-CHARGING USB PORTS



REGULAR CAB | 8' BOX

F-250 SRW, F-350 SRW,
F-350 DRW, F-450 DRW

SUPERCAB™ | 6.75' BOX

F-250 SRW, F-350 SRW

SUPERCAB | 8' BOX

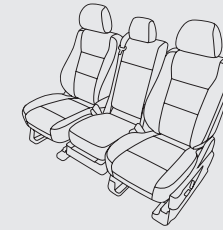
F-250 SRW, F-350 SRW,
F-350 DRW

CREW CAB | 6.75' BOX

F-250 SRW, F-350 SRW

CREW CAB | 8' BOX

F-250 SRW, F-350 SRW,
F-350 DRW, F-450 DRW



FRONT 40/20/40 SPLIT BENCH SEAT
Standard

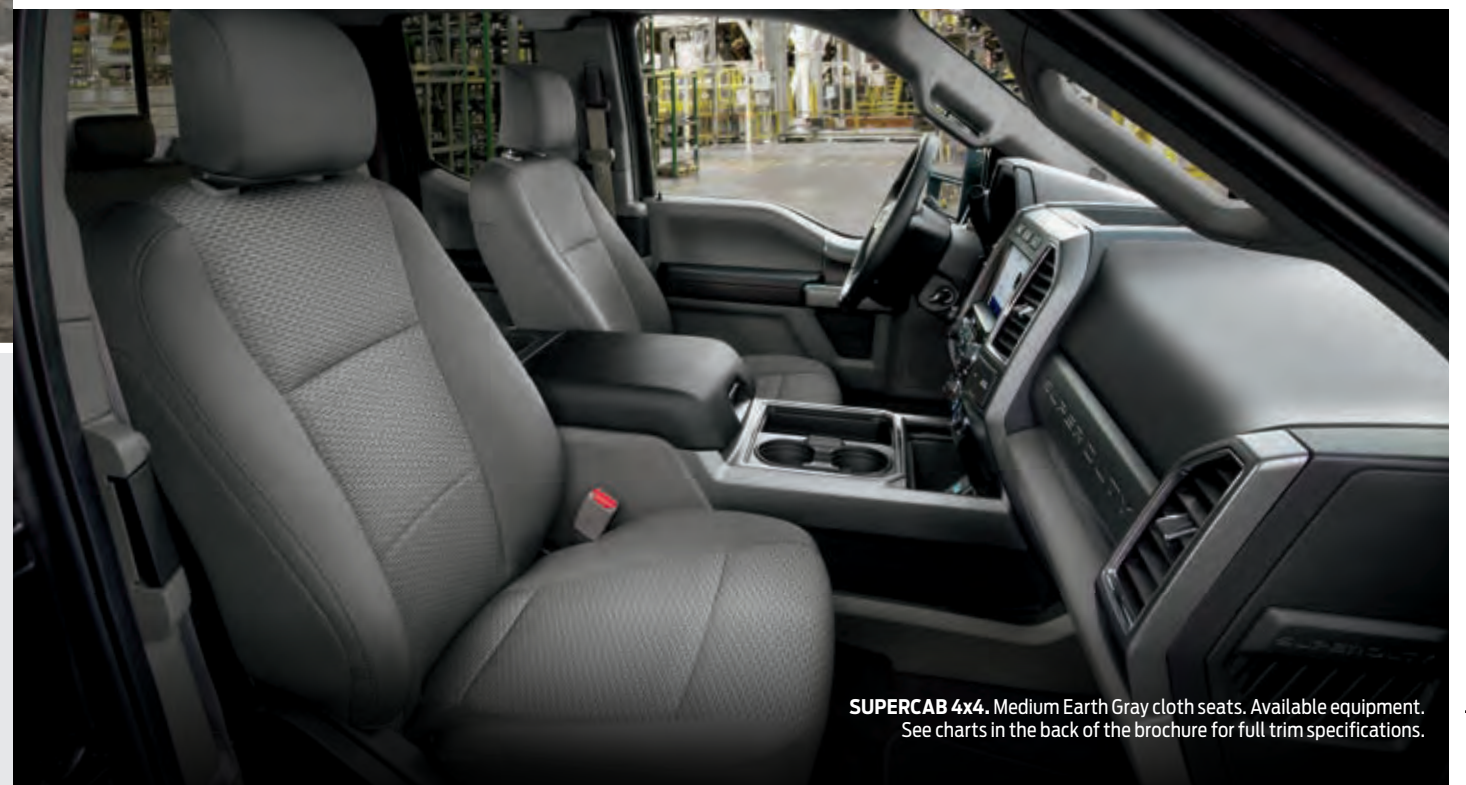
FRONT BUCKET SEATS WITH CENTER CONSOLE
Available



F-250 SUPERCAB 4x4. Velocity Blue Metallic. Available XLT Premium and FX4 Off-Road Packages. Available equipment.



SUPERCAB 4x4. Medium Earth Gray interior. Available equipment.



SUPERCAB 4x4. Medium Earth Gray cloth seats. Available equipment. See charts in the back of the brochure for full trim specifications.



STANDARD



AVAILABLE XLT PREMIUM PACKAGE

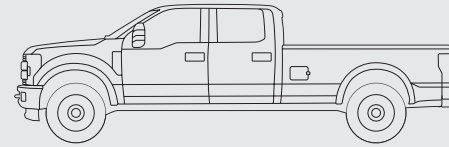


AVAILABLE TREMOR® OFF-ROAD PACKAGE

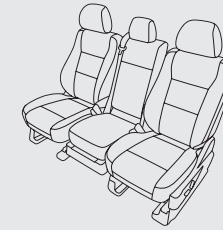
LARIAT™

HIGHLIGHTS

- DUAL-ZONE ELECTRONIC AUTOMATIC TEMPERATURE CONTROL
- POWER-SLIDING REAR WINDOW WITH DEFROSTER
- SECURICODE™ KEYLESS ENTRY KEYPAD
- POWERSCOPE® POWER-TELESCOPING/-FOLDING TRAILER TOW MIRRORS
- REVERSE SENSING SYSTEM



- SUPERCAB™ | 6.75' BOX**
F-250 SRW, F-350 SRW
- SUPERCAB | 8' BOX**
F-250 SRW, F-350 SRW, F-350 DRW
- CREW CAB | 6.75' BOX**
F-250 SRW, F-350 SRW
- CREW CAB | 8' BOX**
F-250 SRW, F-350 SRW, F-350 DRW, F-450 DRW



- FRONT BUCKET SEATS WITH CENTER CONSOLE**
Standard
- FRONT 40/20/40 SPLIT BENCH SEAT**
Available



F-250 CREW CAB 4x4. Rapid Red Metallic Tinted Clearcoat.¹ Available Chrome and FX4 Off-Road Packages. Available equipment and aftermarket accessories. Try to avoid water higher than the bottom of the hubs and proceed slowly. Refer to your owner's manual for detailed information regarding driving through water.



CREW CAB 4x4. Black interior. Available equipment.



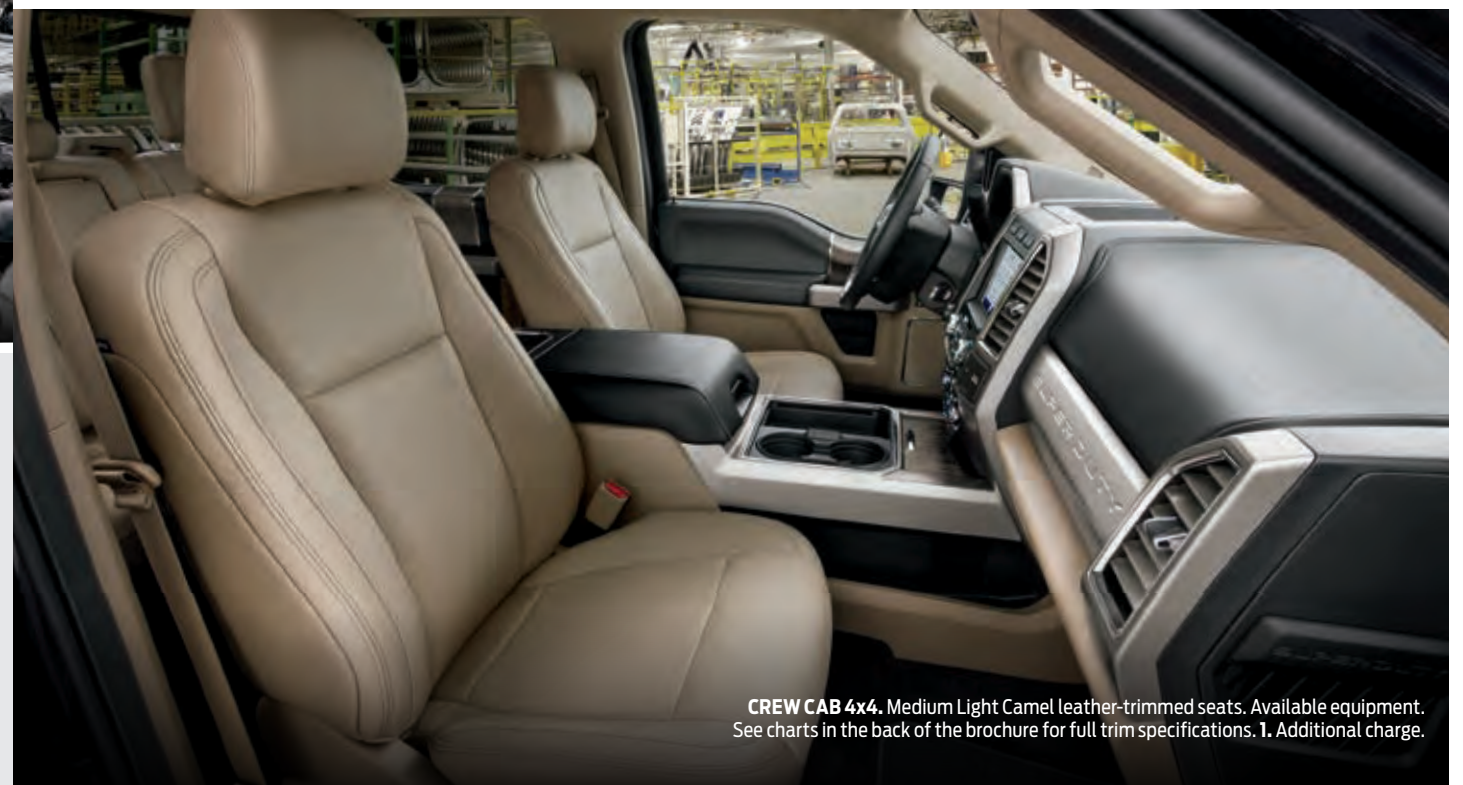
STANDARD



AVAILABLE BLACK PACKAGE



AVAILABLE TREMOR® OFF-ROAD PACKAGE

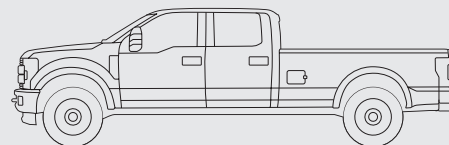


CREW CAB 4x4. Medium Light Camel leather-trimmed seats. Available equipment. See charts in the back of the brochure for full trim specifications. ¹ Additional charge.

KING RANCH®

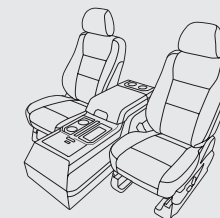
HIGHLIGHTS

- ULTIMATE TRAILER TOW CAMERA SYSTEM
- VOICE-ACTIVATED TOUCHSCREEN NAVIGATION SYSTEM
- INTELLIGENT ACCESS WITH PUSH-BUTTON START
- REMOTE TAILGATE RELEASE
- JAVA INTERIOR WITH GENUINE KHAYA WOOD ACCENTS



CREW CAB | 6.75' BOX
F-250 SRW, F-350 SRW

CREW CAB | 8' BOX
F-250 SRW, F-350 SRW,
F-350 DRW, F-450 DRW



FRONT BUCKET SEATS WITH CENTER CONSOLE
Standard



F-350 DRW CREW CAB 4x4. Agate Black/Stone Gray Metallic. Available FX4 Off-Road Package. Available equipment.



CREW CAB 4x4. Java interior. Available equipment.



AVAILABLE CHROME PACKAGE



AVAILABLE MONOCHROMATIC PAINT PACKAGE



AVAILABLE TREMOR® OFF-ROAD PACKAGE

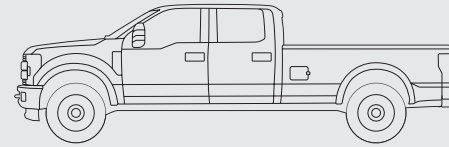


CREW CAB 4x4. Kingsville KING RANCH leather seats with vinyl piping. Available equipment. See charts in the back of the brochure for full trim specifications.

PLATINUM[®]

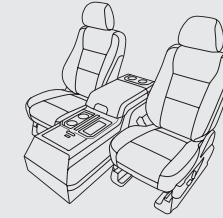
HIGHLIGHTS

- ULTIMATE TRAILER TOW CAMERA SYSTEM
- VOICE-ACTIVATED TOUCHSCREEN NAVIGATION SYSTEM
- INTELLIGENT ACCESS WITH PUSH-BUTTON START
- ADAPTIVE CRUISE CONTROL
- PLATINUM BRUSHED-ALUMINUM AND GENUINE ONYX ARGENTO OPEN PORE WOOD INTERIOR ACCENTS



CREW CAB | 6.75' BOX
F-250 SRW, F-350 SRW

CREW CAB | 8' BOX
F-250 SRW, F-350 SRW,
F-350 DRW, F-450 DRW



**FRONT BUCKET SEATS
WITH CENTER CONSOLE**
Standard



F-350 CREW CAB 4x4. Antimatter™ Blue Metallic. Available FX4 Off-Road Package. Available equipment.



CREW CAB 4x4. Dark Marsala interior. Available equipment.



CREW CAB 4x4. Black Luxury leather seating surfaces with vinyl center tufted stripes. Available equipment. See charts in the back of the brochure for full trim specifications.



STANDARD

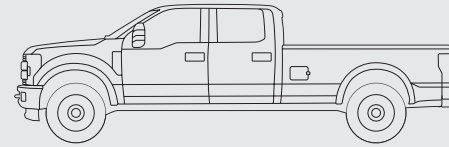


AVAILABLE TREMOR[®] OFF-ROAD PACKAGE

LIMITED

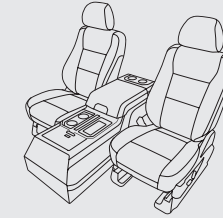
HIGHLIGHTS

- 6.7L POWER STROKE® V8 TURBO DIESEL ENGINE
- ADAPTIVE STEERING
- ULTIMATE TRAILER TOW CAMERA SYSTEM
- ADAPTIVE CRUISE CONTROL
- MODERN BLACK BRUSHED-ALUMINUM AND GENUINE BLACK COARSE ASH WOOD INTERIOR ACCENTS



CREW CAB | 6.75' BOX
F-250 SRW, F-350 SRW

CREW CAB | 8' BOX
F-250 SRW, F-350 SRW,
F-350 DRW, F-450 DRW



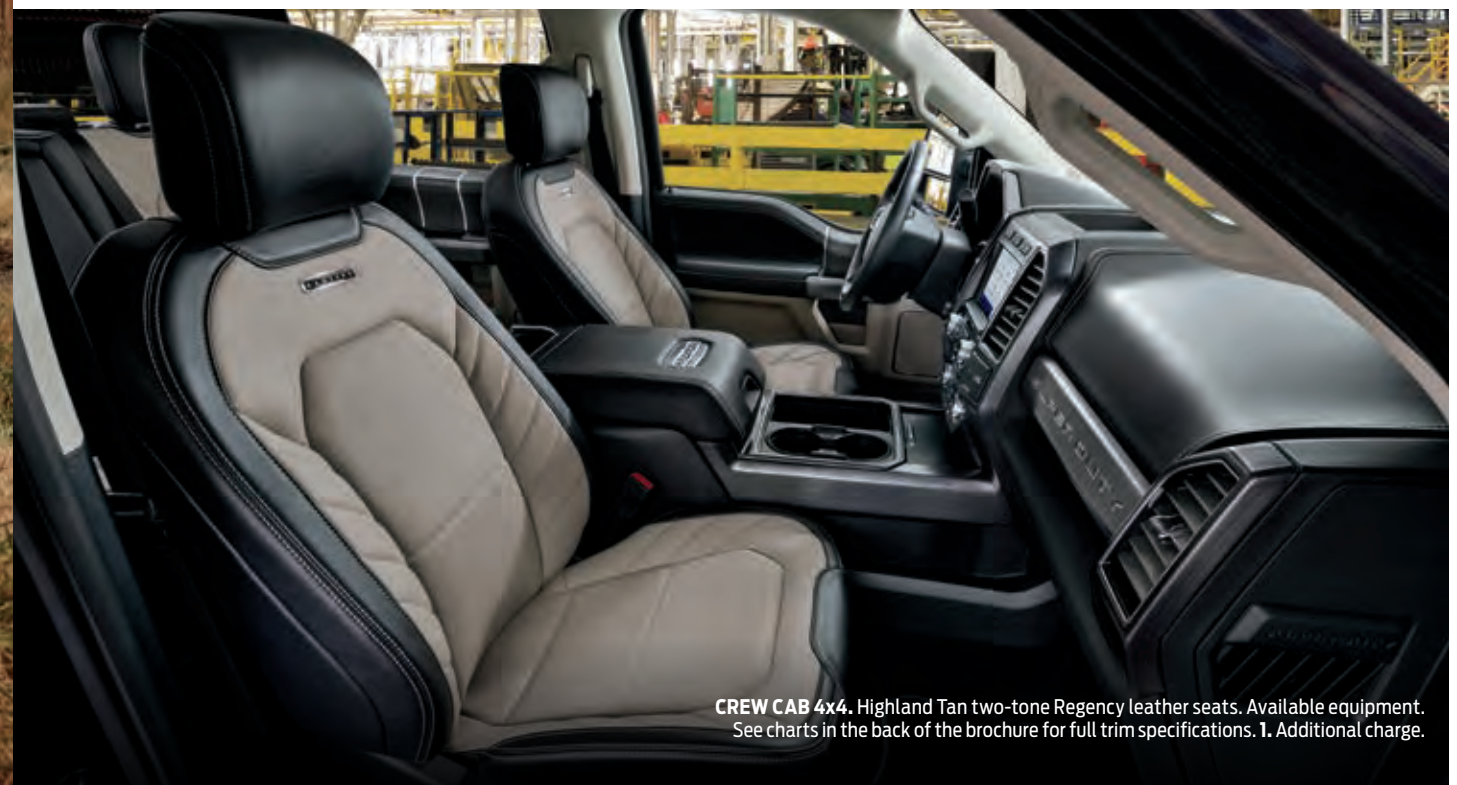
**FRONT BUCKET SEATS
WITH CENTER CONSOLE**
Standard



F-450 CREW CAB 4x4. Star White Metallic Tri-coat¹. Available equipment.



CREW CAB 4x4. Highland Tan interior. Available equipment.



CREW CAB 4x4. Highland Tan two-tone Regency leather seats. Available equipment. See charts in the back of the brochure for full trim specifications. ¹ Additional charge.

WHEELS



A



B



C



D



E



F



G



H



I



J



K



L



M



N



O

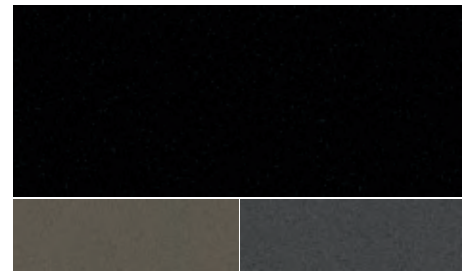


P

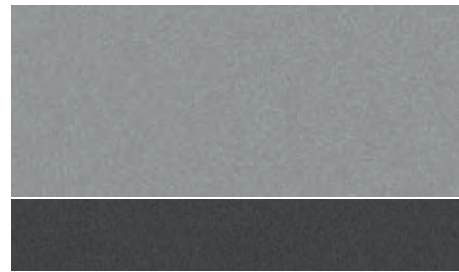
XL	XLT	LARIAT™	KING RANCH®	PLATINUM®	LIMITED	
						S: STANDARD O: OPTIONAL P: PACKAGED
						F-250/F-350 SRW WHEELS/TIRES
S						A. 17" Argent-Painted Steel with Painted Center Cap
O						B. 18" Argent-Painted Steel with Painted Center Cap (F-350)
P	S					C. 18" Cast-Aluminum with Bright Center Cap (included in STX® Package)
	P	P	P			D. 18" Chrome-Like PVD Aluminum with Bright Center Cap (included in Chrome Packages; includes KING RANCH Center Cap on KING RANCH)
	P	P	P	P		E. 18" Low-Gloss Black-Painted Aluminum with Black Center Cap (included in TREMOR® Package)
		S	S			F. 18" Bright-Machined Cast-Aluminum with Bright Center Cap (includes KING RANCH Center Cap on KING RANCH)
		P				G. 20" High-Gloss Black-Painted Premium Aluminum with Black Center Cap (included in LARIAT Black Package)
		O				H. 20" Premium Cast-Aluminum with Bright Center Ornament (4x4)
		O	O			I. 20" Chrome-Like PVD Aluminum with Bright Center Cap ¹ (requires Chrome Package; includes KING RANCH Center Cap on KING RANCH)
			O			J. 20" Premium Painted Cast-Aluminum with KING RANCH Center Cap (4x4)
				S		K. 20" Polished Aluminum with Bright Center Cap
				S		L. 20" Polished Aluminum with Bright Center Cap
S						LT245/75R17E BSW all-season tires
O						LT245/75R17E BSW all-terrain tires
O						LT265/70R17E OWL all-terrain tires
O	S	S	S			LT275/65R18E BSW all-season tires ¹
O	O	O	O			LT275/70R18E BSW all-terrain tires ¹ (4x4)
O	O	O	O			LT275/70R18E OWL all-terrain tires ¹ (4x4) (XL requires STX Package)
		O	O	S	S	LT275/65R20E OWL all-terrain tires (4x4)
	P	P	P	P		LT285/75R18E BSW 35" off-road tires (included in TREMOR Off-Road Package)
						F-350 DRW WHEELS/TIRES
S	S					M. 17" Argent-Painted Steel without Center Cap
O	O					N. 17" Stainless Steel Covers, Front and Rear ¹ (requires steel wheels)
O	O	S	S	S	S	O. 17" Polished Forged-Aluminum ² with Bright Center Cap (includes KING RANCH Center Cap on KING RANCH)
S	S	S	S	S	S	LT245/75R17E BSW all-season tires
O	O	O	O	O	O	LT245/75R17E BSW all-terrain tires
		O	O	O	O	LT245/75R17E OWL all-terrain tires (BSW rear inner tires)
						F-450 DRW WHEELS/TIRES
S	S	S	S	S	S	P. 19.5" Polished Forged-Aluminum ² with Bright Center Cap (includes KING RANCH Center Cap on KING RANCH)
S	S	S	S	S	S	225/70R19.5G BSW traction tires

1. Restrictions may apply. See your dealer for details. 2. Inner rear wheels are steel.

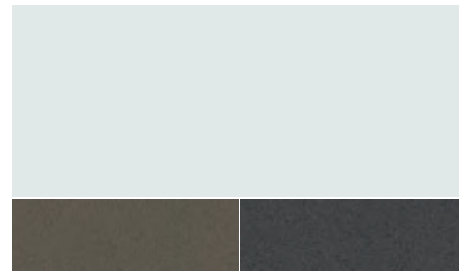
EXTERIOR & INTERIOR



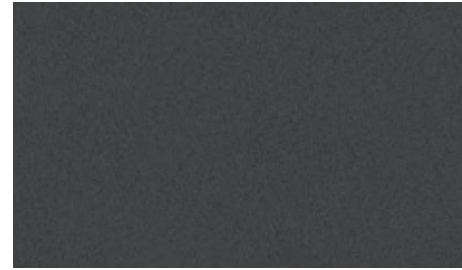
Agate Black Stone Gray Two-Tone Carbonized Gray Two-Tone



Iconic Silver Carbonized Gray Two-Tone



Oxford White Stone Gray Two-Tone Carbonized Gray Two-Tone



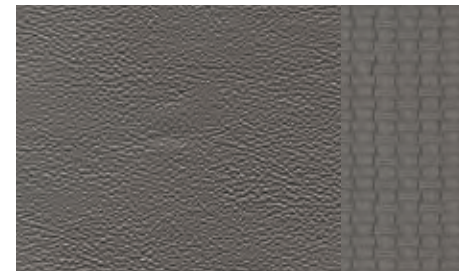
Carbonized Gray



Race Red



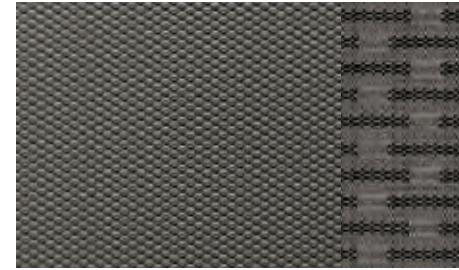
Stone Gray



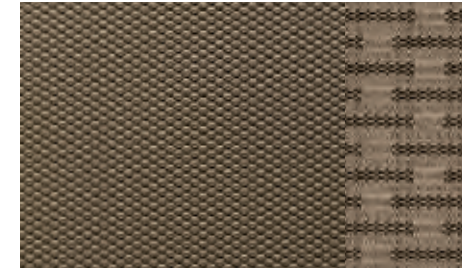
1 Medium Earth Gray Vinyl XL STX



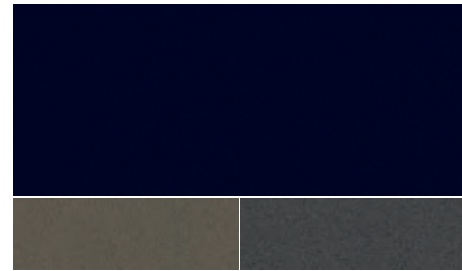
2 Dark Earth Gray Cloth XL STX



3 Medium Earth Gray Cloth XLT



4 Medium Light Camel Cloth XLT



Antimatter Blue Stone Gray Two-Tone Carbonized Gray Two-Tone



Velocity Blue



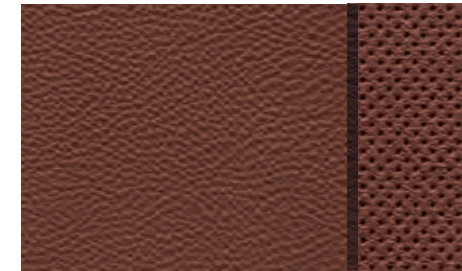
Lithium Gray



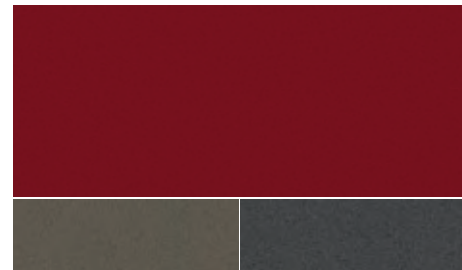
5 Black Leather LARIAT



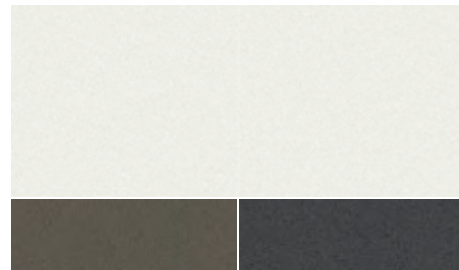
6 Medium Light Camel Leather LARIAT



7 Kingsville KING RANCH Leather/Tuxedo Stripes KING RANCH



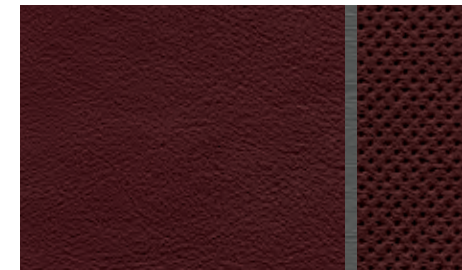
Rapid Red Metallic Tinted Clearcoat¹ Stone Gray Two-Tone Carbonized Gray Two-Tone



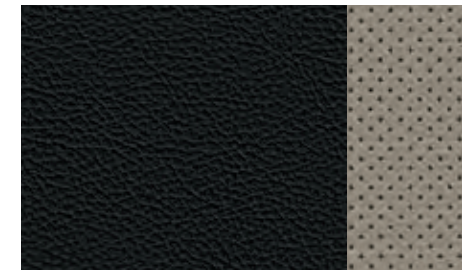
Star White Metallic Tri-coat¹ Stone Gray Two-Tone Carbonized Gray Two-Tone



8 Black Luxury Leather/Silver Smoke Vinyl Tuxedo Stripes PLATINUM



9 Dark Marsala Luxury Leather/Silver Smoke Vinyl Tuxedo Stripes PLATINUM



10 Highland Tan Two-Tone Regency Leather LIMITED

	XL	STX [®]	XLT	LARIAT ^{™2}	LARIAT BLACK	KING RANCH ^{®3}	KING RANCH MONOTONE	PLATINUM [®]	LIMITED
Agate Black Metallic	1 2	1 2	3 4	5 6	5	7	7	8 9	10
Iconic Silver Metallic	1 2	1 2	3 4	5 6	5			8 9	10
Oxford White	1 2	1 2	3 4	5 6		7	7		
Carbonized Gray Metallic	1 2	1 2	3	5	5			8 9	10
Race Red	1 2	1 2	3 4	5 6					
Stone Gray Metallic	1 2	1 2	3 4	5 6			7		10
Antimatter [™] Blue Metallic	1 2	1 2	3 4	5 6	5	7	7	8 9	
Velocity Blue Metallic		1 2	3 4	5 6	5			8	
Lithium Gray Metallic			4	5 6	5		7	8	
Rapid Red Metallic Tinted Clearcoat ¹			3 4	5 6	5	7	7	8	10
Star White Metallic Tri-Coat ¹				5 6	5	7	7	8 9	10

Colors are representative only. See your dealer for actual paint/trim options.
 1. Additional charge. 2. Stone Gray and Carbonized Gray Two-Tone are optional on LARIAT. 3. Stone Gray Two-Tone is standard on KING RANCH.

STANDARD FEATURES

MECHANICAL & FUNCTIONAL

2.5" trailer hitch receiver (F-250; F-350 SRW with gas engines)
3.0" trailer hitch receiver with 2.5"-3.0" sleeve reducer (F-350 SRW with diesel engine; DRW)
4-wheel disc brakes with Anti-Lock Brake System (ABS)

5th-Wheel/Gooseneck Trailer Tow Prep Package (F-450): 1 under-bed frame crossmember, 5 pickup bed 5th-wheel/gooseneck attachment points and close-out plugs, and an integrated 7-pin connector on the driver's side pickup bed wall (see dealer for 5th-wheel/gooseneck hitch compatibility)

7-wire trailer tow wiring harness with relays and 7-/4-pin connector

Axle – Narrow-track front (F-250/F-350)

Axle – Wide-track front (F-450)

Electronic shift-on-the-fly (ESOF) transfer case with manual-locking hubs (4x4)

Front license plate bracket

Front stabilizer bar

Heavy-duty gas shock absorbers

Hydraulic power-assisted steering

Intelligent Oil-Life Monitor® (diesel engine)

Jack (2-ton mechanical with SRW; 4-ton hydraulic with DRW)

Leaf-spring rear suspension

Oil-life minder (gas engine)

Spare wheel, tire, lock and frame-mounted carrier (optional with pickup box delete)

Stationary Elevated Idle Control (SEIC)¹

Trailer brake controller with Smart Trailer Tow Connector (DRW)

Twin-coil monobeam front suspension with stabilizer bar (4x4 and F-450 4x2)

Twin-I-Beam coil spring front suspension with stabilizer bar (F-250/F-350 4x2)

FORD CO-PILOT360™ TECHNOLOGY

Autolamp (Automatic On/Off Headlamps)

Hill Start Assist

Rear View Camera with Dynamic Hitch Assist

Trailer Sway Control

CONNECTIVITY & ENTERTAINMENT

12V powerpoint in instrument panel

FordPass™ Connect² with 4G LTE Wi-Fi hotspot capability³

EXTERIOR

Center high-mounted stop lamp (CHMSL) with cargo lamp

Configurable daytime running lamps

Front tow hooks

LED roof marker/clearance lamps (DRW)

Pickup box with rail and tailgate moldings, and 4 tie-down hooks

Removable tailgate with key lock

Underhood service lamp

Variable-intermittent windshield wipers with washers

SAFETY & SECURITY

AdvanceTrac® with RSC® (Roll Stability Control™)

Driver and right-front-passenger front airbags⁴ front-seat side airbags⁴ and Safety Canopy® System with side-curtain airbags⁴ and rollover sensor

Front-passenger airbag deactivation switch

Individual Tire Pressure Monitoring System (F-250/F-350; excludes spare)

MyKey® technology to help encourage responsible driving

SecuriLock® Passive Anti-Theft System

SOS Post-Crash Alert System™

1. Final-stage manufacturer must supply control switches. **2.** FordPass Connect, the FordPass App, and complimentary Connected Service are required for remote features (see FordPass Terms for details). Connected service and features depend on compatible AT&T network availability. Evolving technology/cellular networks/vehicle capability may limit functionality and prevent operation of connected features. Connected service excludes Wi-Fi hotspot. FordPass App, compatible with select smartphone platforms, is available via download. Message and data rates may apply. **3.** Wi-Fi hotspot includes complimentary wireless data trial that begins upon AT&T activation and expires at the end of 3 months or when 3GB of data is used, whichever comes first, but cannot extend beyond the complimentary subscription period for remote features. To activate, go to www.att.com/ford. **4.** Always wear your safety belt and follow airbag warning label instructions. **5.** Restrictions may apply. See your dealer for details. **6.** Requires available 5th-Wheel/Gooseneck Trailer Tow Prep Package. **7.** Trial length and service availability may vary by model, model year or trim. All SiriusXM services require a subscription, each sold separately by SiriusXM after the trial period. Service will automatically stop at the end of your trial unless a subscription is purchased. See the SiriusXM Customer Agreement at www.siriusxm.com for complete terms. Some services and features are subject to device capabilities and location availability. All fees, content and features are subject to change. **8.** Ford Licensed Accessory. **9.** Do not place additional floor mats or any covering on top of the original floor mats.

XL	XLT	LARIAT™	KING RANCH®	PLATINUM®	LIMITED	
						S: STANDARD O: OPTIONAL P: PACKAGED
S	S	S	S	S	S	ENGINES & TRANSMISSIONS
						6.2L 2-valve gas V8 FFV engine with TorqShift-G 6-speed SelectShift® automatic transmission with Selectable Drive Modes (F-250)
S	S	S	S	S	S	6.2L 2-valve gas V8 FFV engine with TorqShift® 10-speed SelectShift automatic transmission with Selectable Drive Modes (F-350)
O	O	O	O	O	O	7.3L 2-valve gas V8 FFV engine with TorqShift 10-speed SelectShift automatic transmission with Selectable Drive Modes (F-250/F-350)
O	O	O	O	O	S	6.7L Power Stroke® V8 Turbo Diesel engine with TorqShift 10-speed SelectShift automatic transmission with Selectable Drive Modes (F-250/F-350)
						MECHANICAL & FUNCTIONAL
S						650-CCA, 72-amp-hr single battery (gas)
	S	S	S	S	S	750-CCA, 78-amp-hr single battery (gas)
^{5/0}	^{5/0}	^{5/0}	^{5/0}	^{5/0}	S	750-CCA, 78-amp-hr dual batteries (standard diesel; optional gas)
^{5/0}	S	S	S	S	S	Trailer brake controller with Smart Trailer Tow Connector (standard on DRW, optional on XL SRW)
P	P	S	S	S	S	Electronically controlled hydraulic steering ⁵ (included with Pro Trailer Backup Assist™)
O	O					Engine idle shutdown (5-, 10-, 15- or 20-minute)
O	O					Operator-commanded exhaust filter regeneration (diesel engine)
O	O	O	O	O	O	Engine block heater
O	O	O	O	O	O	Power takeoff (PTO) provision with live-drive mobile and stationary modes ⁵ (requires 10-speed transmission; PTO port located on driver's side; split-shaft capability included with diesel engine only)
O	O	O	O	O	O	Trailer tow – 5th-wheel hitch ^{5,6} (19,000-lb. rating on SRW, 32,500-lb. rating on DRW)
O	O	O	O	O	O	Trailer tow – Gooseneck dual hitch kit ^{5,6} includes one 2 5/16" gooseneck ball, one 3" gooseneck ball, and 2 safety chain tie-down bars (F-450)
O	O	O	O	O	O	Trailer tow – Gooseneck hitch kit ^{5,6} (F-250/F-350)
O	O	O	O	O	O	Upfitter interface module (Fleet only)
	O	O	O	O	O	12,000-lb. Ford Performance Parts Winch by WARN® with wireless and wired remote controls, and 70-ft. high-tensile strength, abrasion-resistant synthetic line ⁹ (requires TREMOR Off-Road Package)
		O	O	O	O	Wheel locks (20" wheels only)
						FORD CO-PILOT360 TECHNOLOGY
	S	S	S	S	S	Auto High-Beam Headlamps
O	S	S	S	S	S	BLIS® (Blind Spot Information System) with Trailer Coverage and Cross-Traffic Alert ⁵
O	S	S	S	S	S	Pre-Collision Assist with Automatic Emergency Braking (AEB)
	O	S	S	S	S	Reverse Sensing System
	O	O	S	S	S	Voice-Activated Touchscreen Navigation System with HD Radio™ Technology, and integrated SiriusXM Traffic and Travel Link® with 5-year subscription ⁷
		O	S	S	S	Rain-Sensing Windshield Wipers ⁵
O	O	O	S	S	S	Ultimate Trailer Tow Camera System: ⁵ Pro Trailer Backup Assist with Trailer Reverse Guidance, 360-Degree Camera with Split-View Display, rear CHMSL camera with LED CHMSL, and Lane-Keeping Alert with Driver Alert System
		O	O	S	S	Adaptive Cruise Control ⁵
		O	O	O	S	Adaptive Steering
O	O					Audible Lane Departure Warning ⁵ (F-250/F-350; requires pickup box delete)
						SEATING
S	S	S	S	S	S	60/40 split flip-up rear seat (SuperCab™/Crew Cab)
S						40/20/40 split front bench seat with driver's side manual lumbar, and folding armrest with cupholders
S						Heavy-duty vinyl front and rear (SuperCab/Crew Cab) seating
O	S					Cloth front and rear (SuperCab/Crew Cab) seating
	S	O				40/20/40 split front bench seat with driver's side manual lumbar, and center under-seat lockable storage with 12V powerpoint, and folding armrest with cupholders and storage
	P	S	S	S	S	Rear under-seat fold-flat storage; lockable and partitionable (Crew Cab)
	P	S	S	S	S	Rear under-seat storage (SuperCab)
		S				Leather-trimmed front seating surfaces, with premium vinyl (SuperCab) or leather-trimmed (Crew Cab) rear seating surfaces
		S	S	S	S	Fold-down rear-seat center armrest with dual integrated cupholders (Crew Cab)
		S	S	S	S	Front bucket seats and flow-through center console with storage, and rear-facing 12V powerpoint and 110V/400W AC power outlet

XL	XLT	LARIAT	KING RANCH	PLATINUM	LIMITED	
		S	S	S	S	Power front seats (10-way driver; 8-way passenger)
		P	S	S	S	Easy-entry/-exit driver's seat feature with memory
			P	S	S	Heated and ventilated front seats
				S		Kingsville KING RANCH leather front and rear seats with vinyl piping
				S		Luxury leather front and rear seating surfaces with vinyl tuxedo stripes
		O	O	S	S	Heated rear outboard seats ⁵ (Crew Cab)
			P	S	S	Multicontour front bucket seats with Active Motion®
					S	Regency leather front and rear seats
	O					Front bucket seats and flow-through center console with storage, and rear-facing 12V powerpoint and 110V/400W AC power outlet (SuperCab/Crew Cab)
O						Front bucket seats with mini-console and driver's side manual lumbar
						INTERIOR
S	S	S				Manual-tilt/-telescoping steering column
S	S					Fixed rear window
S	S					Single-zone manual climate control
S	O	O				Flooring – Black vinyl/carpet delete
S						2.3" LCD productivity screen in instrument cluster
O	S	S	S	S	S	110V/400W AC power outlet in instrument panel ⁵
O	S	S	S	S	S	Flooring – Carpet with carpeted floor mats ⁵
	S	S	S	S	S	Rear privacy glass
	S	S	S	S	S	Accessory delay for power features
P	S	S	S	S	S	Cruise control
P	S	S	S	S	S	Power door and tailgate locks
P	S	S	S	S	S	Power windows with front one-touch-up/-down feature
P	S					4.2" LCD productivity screen in instrument cluster
	O	S				Power-adjustable pedals
		S	S	S	S	Power-sliding rear window with defroster ⁵ (SuperCab/Crew Cab)
		S	S	S	S	8" LCD productivity screen in instrument cluster
		S	S	S	S	Auto-dimming rearview mirror
		S	S	S	S	Dual-zone electronic automatic temperature control
		S	S	S	S	Leather-wrapped steering wheel
		P	S	S	S	Ice Blue ambient lighting
		P	S	S	S	Intelligent Access with push-button start
		P	S	S	S	Power-adjustable pedals with memory
		P	S	S	S	Power-tilt/-telescoping steering column with memory
		P	S	S	S	Wireless charging pad
		O	S	S	S	Heated steering wheel ⁵
		O	S	S	S	Universal garage door opener
				S		Kingsville KING RANCH leather and genuine Khaya wood accents, and brushed-aluminum front door-sill scuff plate inserts with KING RANCH lettering
				S		Genuine Onyx Argento Open Pore wood and Platinum brushed-aluminum accents, and aluminum front door-sill scuff plates
O	O	O	O	O	S	Upfitter switches, 6 located in overhead console ⁵
					S	Miko® Suede cloth headliner; Ebony Geneva leather, genuine Black Coarse Ash wood, and Modern Black brushed-aluminum accents; LIMITED appliqué with unique VIN plate on center console lid; and aluminum front door-sill scuff plates with illuminated LIMITED lettering
O	O	O	O	O	O	Rapid-heat supplemental cab heater (diesel engine)
O	O					Fixed rear window with defroster
	O	O	O	O	O	Flooring – Floor liners ⁵ (SuperCab/Crew Cab)
		O	O	O	O	Vehicle safe ^{5,8}
			O	O	O	Flooring – Vinyl with front and rear carpeted floor mats and floor liners ⁹
	^{5/0}	^{5/0}	^{5/0}	^{5/0}	^{5/0}	EXTERIOR
S						LED roof marker/clearance lamps (standard DRW, optional SRW)
S						Black grille, bumpers, mirror caps, and door and tailgate handles
S						Manually telescoping trailer tow mirrors with 2-way fold, manual glass and black mirror caps
S	S	S	S			Quad-beam jewel-effect halogen headlamps
	S					Manually telescoping trailer tow mirrors with 2-way fold, power/heated glass, heated manual spotter mirrors, and integrated clearance lamps and turn signal indicators ⁵
O	^{5/0}					Cab steps – Black platform running boards (standard XLT DRW; optional XLT SRW)
O	S	S	S	S	S	BoxLink™ with 4 premium lockable cleats

XL	XLT	LARIAT	KING RANCH	PLATINUM	LIMITED	
	S	S	S	S	S	Advanced Security Pack with inclination/intrusion sensors
P	S	S	S	S	S	Remote Keyless Entry System
	S					Chrome grille and bumpers; black mirror caps and door and tailgate handles
	P	S	S	S	S	SecuriCode™ keyless entry keypad
	O	S	S	S	S	PowerScope® power-telescoping/-folding trailer tow mirrors with power/heated glass, heated manual spotter mirrors, autofold, high-intensity LED security approach lamps, and LED sideview mirror spotlights
O	O	^{5/0}				Cab steps – 6" chrome angular step bars ⁵ (SuperCab/Crew Cab; standard LARIAT DRW; optional LARIAT SRW)
	O	S	S			Halogen fog lamps
		S				Chrome grille, bumpers and tailgate handle; body-color mirror caps and door handles
		P	S	S	S	Memory feature for sideview mirrors
		P	S	S	S	Remote tailgate release with power remote lock
		O	S			Two-tone paint with Stone Gray lower accent color (includes Stone Gray wheel-lip moldings on SRW)
O	O	O	S	S	S	LED box lighting with LED CHMSL ⁵
O	O	O	S	S	S	Remote Start System ⁵
			S			Chrome grille with Caribou inserts; Stone Gray bumpers; body-color mirror caps and door handles; chrome tailgate handle
O	O	O	O	S	S	Tailgate step with grab bar and tailgate lift assist
		O	O	S	S	Cab steps – Power-deployable running boards ⁵
		O	O	S	S	Quad-beam LED headlamps, and LED fog lamps and taillamps ⁵
			S	S		Splash guards, molded, front (F-350 DRW)
			S	S		Wheel-well liners, rear ⁵ (DRW)

ENGINES

	6.2L 2-Valve Gas V8 FFV	7.3L 2-Valve Gas V8 FFV	6.7L Power Stroke® V8 Turbo Diesel
Horsepower	385 hp @ 5,750 rpm	430 hp @ 5,500 rpm	475 hp @ 2,600 rpm
Torque	430 lb.-ft. @ 3,800 rpm	475 lb.-ft. @ 4,000 rpm	1,050 lb.-ft. @ 1,600 rpm
Configuration	SOHC	OHV	OHV (32-valve)
Electronic fuel injection	Sequential multi-port	Port fuel injection	High-pressure common-rail
Induction system	Specially tuned	Naturally aspirated	Single-sequential turbocharger; charged air cooler
Block material	Cast iron	Cast iron	Compacted graphite iron
Valve operation	Roller-rocker shafts	Push rod/rocker arms	Push rod/rocker arms
Camshaft drive	Silent chain	Chain	Gear
Compression ratio	9.8:1	10.5:1	15.8:1
Recommended fuel	Regular unleaded or E85; bi-fuel-capable CNG or propane autogas (requires available upfit)	Regular unleaded	Ultra-low-sulfur diesel or B29 (containing 20% or less biodiesel)

REAR AXLES

Engine	Configuration	Standard	Available
6.2L Gas	F-250/F-350 SRW	3.73 non-limited-slip	3.73 electronic-locking 4.30 electronic-locking
	F-350 DRW	3.73 non-limited-slip	4.30 limited-slip
7.3L Gas	F-250 SRW	3.55 non-limited-slip	3.55 electronic-locking 4.30 electronic-locking
	F-350 SRW	3.73 electronic-locking	4.30 electronic-locking
	F-350 DRW	3.73 limited-slip	4.30 limited-slip
6.7L Diesel	F-250/F-350 SRW	3.31 non-limited-slip	3.55 non-limited-slip ¹ 3.31 electronic-locking 3.55 electronic-locking ¹
	F-350 DRW	3.55 non-limited-slip	3.55 limited-slip 4.10 limited-slip
	F-450 DRW	4.30 limited-slip	

All best-in-class configurations shown **bolded** and in color.

SRW = Single Rear Wheel DRW = Dual Rear Wheel WB = Wheelbase GVWR = Gross Vehicle Weight Rating GCWR = Gross Combined Weight Rating **1.** Restrictions may apply. See your dealer for details. **2.** Requires available F-250 High-Capacity Trailer Tow Package. **3.** Requires available F-350 Gas Heavy-Duty Payload Package. **4.** Gooseneck tow rating shown. 5th-wheel tow rating limited to 5th-wheel hitch rating of 19,000 lbs. **5.** Requires TREMOR® Off-Road Package. **6.** Gooseneck tow rating shown. 5th-wheel tow rating limited to 5th-wheel hitch rating of 32,500 lbs. **7.** 50% Weight Distribution setup required. **8.** 25% Weight Distribution setup required.

PAYLOAD GVWR & Maximum Payload Weight Ratings (lbs.)

	GVWR	Regular Cab	SuperCab™		Crew Cab	
		141.6" WB	148.0" WB	164.2" WB	159.8" WB	176.0" WB
F-250 SRW 4x2	9,900	4,160	3,880	3,770	3,780	3,550
	10,000	4,260	3,980	3,870	3,880	3,650
	10,600 ²	3,940 ²				
	10,700 ²		3,770 ²			
F-250 SRW 4x4	9,900	3,720	3,450	3,360	3,370	3,110
	10,000	3,820	3,550	3,460	3,470	3,210
	10,800 ²	3,270 ²	3,460 ²	3,310 ²	3,320 ²	3,040 ²
	10,800 ²			3,740 ²	3,750 ²	3,520 ²
F-350 SRW 4x2	10,000	4,060	3,810	3,690	3,650	3,420
	10,100	4,160	3,910			
	10,200				3,850	
	10,400			4,090		
	10,500	4,500				
	10,600	3,930	4,350			4,020
	10,700		3,800		4,290	
	10,800				3,720	
	10,900			4,540		
	11,000			3,980		
	11,100	4,380				4,460
	11,200		4,250			
	11,300				4,160	
	11,400			4,320		4,020
11,500			4,420		4,120	
F-350 SRW 4x4	10,000	3,630	3,370	3,260	3,220	2,990
	10,400	4,030				
	10,500		3,870			
	10,600				3,820	
	10,800			4,060		
	10,900	4,470				3,890
	11,000	3,910	4,320			
	11,100				4,260	
	11,200				3,700	
	11,300		4,610	4,500	4,460	4,230
	11,400	4,960	4,020	4,600	3,840	4,320
	11,500	4,350	4,120	4,700	3,940	4,420
	11,800			4,900		
	11,900					4,730
12,000					4,190	
12,400					4,580	
F-350 DRW 4x2	13,000	6,660		6,190		5,960
	14,000	7,850³		7,190		6,960
F-350 DRW 4x4	13,000	6,210		5,770		5,530
	14,000	7,210		6,770		6,530
F-450 DRW 4x2	14,000	6,210				5,630
F-450 DRW 4x4	14,000	5,900				5,320

TOWING GCWR & Maximum Loaded Trailer Weight Ratings (lbs.) - SAE J2807 Compliant

	Engine	Axle Ratio	GCWR	Regular Cab			SuperCab			Crew Cab			
				Conventional			Conventional			Conventional			
				Weight Carrying	Weight Distribution	5th-Wheel/Gooseneck	Weight Carrying	Weight Distribution	5th-Wheel/Gooseneck	Weight Carrying	Weight Distribution	5th-Wheel/Gooseneck	
F-250 SRW 4x2	6.2L Gas	3.73	19,500	13,000	13,300	13,300	13,000	13,000	13,000	12,900	12,900	12,900	
		4.30	22,000	13,000	14,000	15,800	14,000	15,000	15,500	15,000	15,000	15,400	
	7.3L Gas	3.55	21,800	13,000	14,000	15,400	14,000	15,000	15,200	14,900	15,000	15,100	
		4.30	26,000	13,000	14,000	19,500	14,000	15,000	19,300	15,000	15,000	19,200	
	6.7L Diesel	3.31	23,500	14,000	15,000	16,400	15,000	15,000	16,200	15,000	15,000	16,100	
			30,000 ²	14,000 ²	15,200 ²	22,800 ^{2,4}	15,200 ²	15,200 ²	22,000 ^{2,4}	18,200 ²	18,200 ²	21,700 ^{2,4}	
F-250 SRW 4x4	6.2L Gas	3.73	19,500	12,900	12,900	12,800	12,600	12,600	12,600	12,500	12,500	12,500	
		4.30	22,000	14,000	15,000	15,300	15,000	15,000	15,100	15,000	15,000	15,000	
	7.3L Gas	3.55	21,800	14,000	15,000	15,000	14,700	14,800	14,700	14,700	14,700	14,700	
		4.30	24,900 ⁵							15,000 ⁵	15,000 ⁵	17,500 ⁵	
	6.7L Diesel	3.31	23,500	14,000	15,000	16,000	15,000	15,000	15,500	15,000	15,000	18,600	
			30,000 ²	14,000 ²	15,000 ²	21,800 ^{2,4}	20,000 ²	20,000 ²	20,100 ^{2,4}	20,000 ²	20,000 ²	19,100 ^{2,4}	
	F-350 SRW 4x2	6.2L Gas	3.73	19,500	13,000	13,200	13,100	12,800	12,800	12,800	12,700	12,700	12,600
			4.30	23,000	13,000	14,000	16,600	15,000	15,000	16,300	15,000	15,000	16,100
		7.3L Gas	3.73	23,500	13,000	14,000	17,000	15,000	15,000	16,800	15,000	15,000	16,600
			4.30	27,500	13,000	14,000	21,000 ⁴	15,000	15,000	20,800 ⁴	15,000	15,000	20,600 ⁴
		6.7L Diesel	3.31/3.55	30,000	14,000	15,000	22,800 ⁴	15,000	15,000	22,600 ⁴	18,200	18,200	22,400 ⁴
				30,000 ²	14,000 ²	15,000 ²	21,800 ^{2,4}	20,000 ²	20,000 ²	20,100 ^{2,4}	20,000 ²	20,000 ²	19,100 ^{2,4}
F-350 SRW 4x4	6.2L Gas	3.73	19,500	12,700	12,700	12,600	12,400	12,400	12,400	12,300	12,300	12,200	
		4.30	23,000	14,000	15,000	16,100	15,000	15,000	15,900	15,000	15,000	15,700	
	7.3L Gas	3.73	23,500	14,000	15,000	16,600	15,000	15,000	16,300	15,000	15,000	16,200	
		4.30	27,500	14,000	15,000	20,600 ⁴	15,000	15,000	20,300 ⁴	15,000	15,000	20,200 ⁴	
	6.7L Diesel	3.31/3.55	30,000	14,000	15,000	22,400 ⁴	15,000	15,000	22,200 ⁴	20,000	20,000	22,000 ⁴	
			30,000 ²	14,000 ²	15,000 ²	22,400 ⁴	20,000	20,000	22,200 ⁴	20,000	20,000	22,000 ⁴	
F-350 DRW 4x2	6.2L Gas	3.73	20,000	13,200	13,200	13,200	12,700	12,700	12,700	12,500	12,500	12,500	
		4.30	23,500	16,700	16,700	16,700	16,200	16,200	16,200	16,000	16,000	16,000	
	7.3L Gas	3.73	24,000	17,000	17,200	17,200	16,700	16,700	16,700	16,500	16,500	16,500	
		4.30	28,000	17,000	21,000	21,200	18,000	20,700	20,700	19,000	20,500	20,500	
	6.7L Diesel	3.55	40,000	18,000	21,000	32,400	18,000	21,200	32,000	19,000	21,200	31,800	
		4.10	43,400	18,000	21,000	35,750 ⁶	18,000	21,200	35,400 ⁶	19,000	21,200	35,200 ⁶	
F-450 DRW 4x2	6.7L Diesel	4.30	43,500										
			45,300	21,200 ⁸	21,200 ⁸	37,000 ⁶				24,200⁷	24,200⁷	34,600 ⁶	
F-450 DRW 4x4	6.7L Diesel	4.30	43,500										
			45,300	21,200 ⁸	21,200 ⁸	36,400 ⁶				24,200⁷	24,200⁷	32,600 ⁶	

Payload Notes: Maximum payload capabilities are for properly equipped base vehicles with required equipment and a 150-lb. driver and vary based on cargo, vehicle configuration, accessories and number of passengers. See label on door jamb for carrying capacity of a specific vehicle. For additional information, see your Ford Dealer.

Towing Notes: Trailer tongue (trailer king pin for 5th-wheel towing) load weight should be 10% (15% for 5th-wheel towing) of total loaded trailer weight. Make sure vehicle payload (reduced by option weight) will accommodate trailer tongue (trailer king pin for 5th-wheel towing) load weight and weight of passengers and cargo added to towing vehicle. Addition of trailer tongue (trailer king pin for 5th-wheel towing) load weight and weight of passengers and cargo must not cause vehicle weights to exceed rear GAWR or GVWR. These ratings can be found on the vehicle Safety Compliance Certification Label.

Horsepower, torque, payload and towing are independent attributes and may not be achieved simultaneously.



F-250 XLT with available XLT Value Package in Oxford White accessorized with 5" black step bars, hood deflector, side window deflectors,¹ hard-folding tonneau cover,¹ heavy-duty splash guards, chrome front tow hooks, LED fog lamps,¹ and rear wheel-well liners



Stowable load ramps Floor liners 5th-wheel hitch kits Dash cam systems¹



LED warning strobes¹ In-vehicle safe¹ Sports/ladder rack¹ Bed tray

1. Ford Licensed Accessory.

Ford and Oval Device, Active Motion, AdvanceTrac, Antimatter, BLIS, BoxLink, Built Ford Proud, Built Ford Tough, F-Series, Ford Co-Pilot360, Ford Credit, Ford Protect, Ford Telematics, FordPass, FX4, LARIAT, MyKey, PLATINUM, Power Stroke, PowerScope, Pro Trailer Backup Assist, Roll Stability Control, RSC, Safety Canopy, SecuriCode, SecuriLock, SelectShift, SOS Post-Crash Alert System, Super Duty, SuperCab, SYNC, TorqShift, Trail Control and related marks are trademarks of Ford Motor Company.

Apple, Apple CarPlay and iPhone are trademarks of Apple Inc., registered in the U.S. and other countries. BANG & OLUFSEN and B&O are registered trademarks of Bang & Olufsen Group. Licensed by Harman Becker Automotive Systems Manufacturing Kft. All rights reserved. Google, Android, Android Auto and Google Play are trademarks of Google LLC. Requires the Android Auto app on Google Play and an Android compatible smartphone running Android™ 5.0 or higher. HD Radio is a proprietary trademark of iBiquity Digital Corporation. King Ranch is a registered trademark of King Ranch, Inc. Miko is a registered trademark of Miko s.r.l. SiriusXM and all related marks and logos are trademarks of SiriusXM Radio Inc. WARN is a registered trademark of WARN Industries.

Comparisons based on competitive models (class is Full-Size Pickups over 8,500 lbs. GVWR), publicly available information and Ford certification data at time of release. Vehicles may be shown with optional aftermarket and upfit equipment. Features may be offered only in combination with other options or subject to additional ordering requirements/limitations. Dimensions and capacity ratings shown may vary due to optional features and/or production variability. Information is provided on an "as is" basis and could include technical, typographical or other errors. Ford makes no warranties, representations, or guarantees of any kind, express or implied, including but not limited to, accuracy, currency, or completeness, the operation of the information, materials, content, availability, and products. Ford reserves the right to change product specifications, pricing and equipment at any time without incurring obligations. Your Ford Dealer is the best source of the most up-to-date information on Ford vehicles. Body manufacturers are responsible for compliance certification of the completed vehicle. The Ford New Vehicle Limited Warranty and any government certification made by Ford shall cover only the vehicle as manufactured by Ford and shall not extend to any addition, modification or change of or to the vehicle by the Ford Authorized Pool Account.



New Vehicle Limited Warranty. We want your Ford F-Series Super Duty® pickup ownership experience to be the best it can be. Under this warranty, your new vehicle comes with 3-year/36,000-mile bumper-to-bumper coverage, 5-year/60,000-mile Powertrain Warranty coverage, 5-year/60,000-mile safety restraint coverage, and 5-year/unlimited-mile corrosion coverage – all with no deductible. The Ford 6.7L Power Stroke® diesel engine gets 5-year/100,000-mile warranty coverage. Please ask your Ford Dealer for a copy of this limited warranty.

Ford Credit® Get the ride you want. Whether you plan to lease or buy, Ford Credit has the option that's right for you. Ask your Ford Dealer for details or visit us online at ford.com/finance.

Roadside Assistance. Covers your vehicle for 5 years or 60,000 miles, so you have the security of knowing that help may be only a phone call away should you run out of fuel, lock yourself out of the vehicle or need a winch back to a paved road, a battery jump start or towing. Your Ford Dealer can provide complete details on all of these advantages.

Ford Protect™ Extended Service Plans. Whether you purchase or lease your Ford vehicle, insist on genuine Ford Protect extended service plans. Ford Protect has a variety of plans to give you peace-of-mind protection whether you want vehicle component or maintenance coverage. Plus, they are fully backed by Ford and honored at all Ford dealerships in the U.S., Canada and Mexico. When you visit your dealer, insist on genuine Ford Protect extended service plans.

Ford Insure. Insurance that lets you earn discounts for safe driving, offering a maximum discount of 40% off your auto insurance. Ford Insure works with your 2021 Super Duty to gauge driving habits and calculate a discount based on how you drive. Visit www.fordinsure.com to learn more.

American Road Services Company LLC (a Ford affiliate) is the licensed insurance agency offering Ford Insure and is underwritten by Nationwide Mutual Insurance Company and affiliates. Home Office: Columbus, OH. Ford Motor and Ford Credit are not insurance companies or agents. Subject to underwriting guidelines, review and approval. Details and availability varies; program criteria differ in California. Discounts do not apply to all coverage elements; actual savings vary by state, coverage selections, rating factors and policy changes.

Ford Original Accessories. They're warranted for whichever provides you the greatest benefit: 24 months/unlimited mileage, or the remainder of your Bumper-to-Bumper 3-year/36,000-mile New Vehicle Limited Warranty.

Ford Licensed Accessories (FLA) are warranted by the accessory manufacturer's warranty. FLA are designed and developed by the accessory manufacturer and have not been designed or tested to Ford Motor Company engineering requirements. Contact your Ford Dealer for details and/or a copy of all limited warranties.



From day one, we had the future in mind. And over 117 years later, we continue that tradition of innovation with Ford Co-Pilot360™ helping push us closer to autonomous driving, the latest generation of SYNC® to communicate untethered and our first fully electric vehicle – Ford Mustang Mach-E®

We've always had our mind on the future. Now we're building it.

Z1FSDPDF

©2020 Ford Motor Company

The FordPass™ App



Meet FordPass. The app that puts your ownership experience in the palm of your hand.



Access complimentary remote features¹ like start/stop, lock/unlock, schedule a start, locate vehicle and vehicle status check when your vehicle is equipped with FordPass Connect²



With FordPass Rewards, earn Points to use toward complimentary maintenance³ or accessories when you buy or lease a new Ford vehicle



Earn 10 FordPass Rewards Points for every \$1 spent on vehicle service and maintenance



Get help on the road with 24/7 Roadside Assistance⁴



Download the FordPass App today.

1. Remote start and remote lock/unlock require power door locks. **2.** FordPass Connect, the FordPass App, and complimentary Connected Service are required for remote features (see FordPass Terms for details). Connected service and features depend on compatible AT&T network availability. Evolving technology/cellular networks/vehicle capability may limit functionality and prevent operation of connected features. Connected service excludes Wi-Fi hotspot. FordPass App, compatible with select smartphone platforms, is available via download. Message and data rates may apply. **3.** Modem must be activated within 60 days of purchase through the FordPass App on a smartphone and remain active for at least 6 months after activation. Buyers of non-modem-equipped vehicles will also receive Points for complimentary maintenance after enrollment. Visit a participating dealer for details or go to FordPassRewards.com. **4.** Roadside assistance is included for certain owners and available to everyone for a per-service fee.